

A large, stylized green maple leaf is the central focus of the image. The leaf has a prominent central vein and several secondary veins branching out to its lobes. Overlaid on the right side of the leaf is the word "RiWay" in a bold, blue, sans-serif font. The background is white, and the overall composition is clean and modern.

- Nature Derived
- Renewable
- Biodegradable



Our Vision

Sustainability through Oleochemicals
(viz. plant derived chemicals)



Our Mission

To be a key supplier of oleochemicals to our customer(s) for improving their product(s) chemistry / processability.



Our Values

- Care
- Teamwork
- Performance



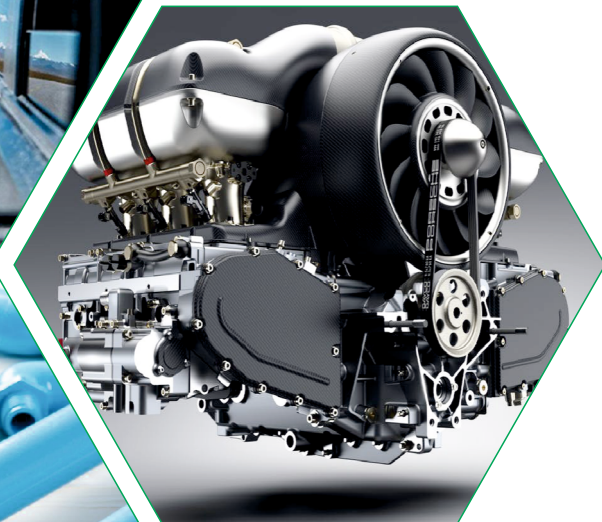
Our Company

We have been in operations since last two decades in manufacturing and supplying plant derived chemicals (viz. oleochemicals) to various industries. We have 2 factories (viz. in Taloja-Maharashtra and in Jhagadia-Gujarat) with a total of 7 reactors of varying sizes (viz. 1 MT to 9 MT) to carry out process reactions (viz. Hydrogenation, Esterification and Dehydration) to produce oleochemicals of appx. 700 MT per month. These multi-size reactors allow us to service our customer's various volume and specification demands. Our products help number of industries to reduce their reliance on petrochemical derived products and thus reduce the impact on the environment. We strongly affirm a motto that 'Ways to Sustainability' is through 'Ways of Oleochemistry'.



Our Raw Materials

They are mainly vegetable oils derived from the seeds / fruits borne by plants of Castor, Soya, Palm, Linseed, Coconut, Rapeseed, Corn and Groundnut.

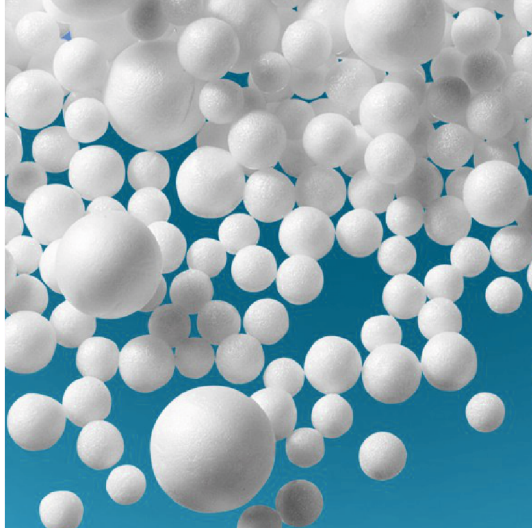


PLASTIC



PVC

Product	Chemistry	Form@25 °C	Melt Point°C	Function
RiWay-Dx	DMG	Fine Beads	70+/-2	External Lubricant
RiWay-Sx	PGMS	Fine Beads	58+/-2	External Lubricant
RiWay-Tx	GTS	Fine Beads	65+/-2	External Lubricant
RiWay-Yx	12 HSA	Fine Beads	72+/-2	External Lubricant
RiWay-lx	SA	Fine Beads	58+/-2	External Lubricant
RiWay-Nx	GMS	Fine Beads	58+/-2	External Lubricant
RiWay-Hx	GMHS	Fine Beads	65+/-2	Internal Lubricant
RiWay-Ax	GTHS	Fine Beads	85+/-2	Internal Lubricant
RiWay-Px	PETS	Fine Beads	62+/-2	Internal Lubricant
RiWay-Lx	GMO	Liquid	-	Internal Lubricant
RiWay-Ox	PGMO	Liquid	-	Internal Lubricant
RiWay-Rx	GMR	Liquid	-	Internal Lubricant
RiWay-Ex	PETO	Liquid	-	Internal Lubricant
RiWay-Nx	GMS	Fine Beads	58+/-2	Antistat
RiWay-Hx	GMHS	Fine Beads	65+/-2	Antistat
RiWay-Nx	GMS	Fine Beads	58+/-2	Antifog
RiWay-Lx	GMO	Liquid	-	Antifog
RiWay-Ox	PGMO	Liquid	-	Antifog



EPS

Product	Chemistry	Form@25 °C	Melt Point°C	Function
RiWay-Dx	DMG	Fine Beads	70+/-2	External Lubricant
RiWay-Tx	GTS	Fine Beads	65+/-2	External Lubricant
RiWay-Ex	PETO	Liquid	-	Internal Lubricant
RiWay-Dx	DMG	Fine Beads	70+/-2	Antistat

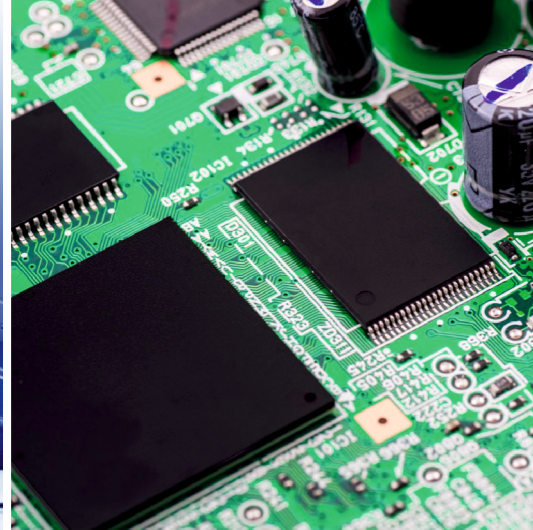




PET

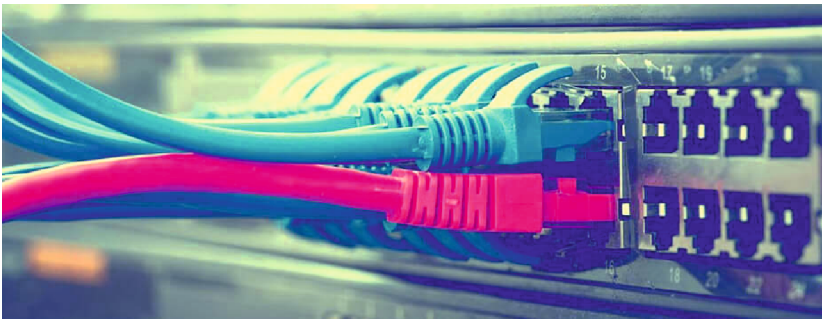
Product	Chemistry	Form@25 °C	Melt Point°C	Function
RiWay-Ex	PET0	Liquid	-	External Lubricant
RiWay-Px	PETS	Fine Beads	62+/-2	External Lubricant

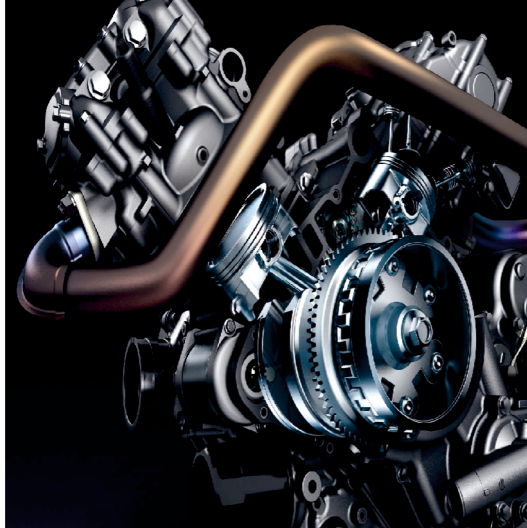




SAN

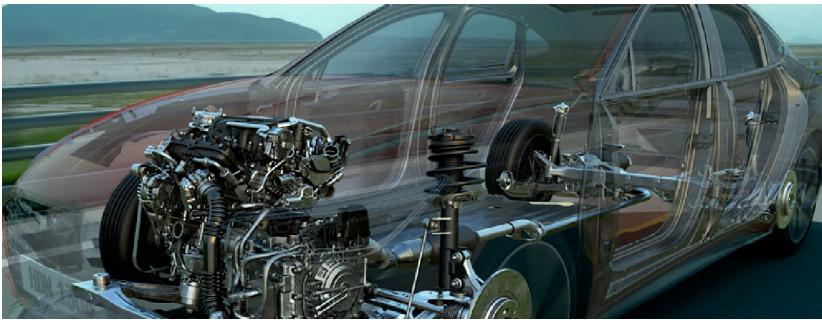
Product	Chemistry	Form@25 °C	Melt Point°C	Function
RiWay-Dx	DMG	Fine Beads	70+/-2	Internal Lubricant
RiWay-Nx	GMS	Fine Beads	58+/-2	Internal Lubricant





POLYAMIDE

Product	Chemistry	Form@25 °C	Melt Point°C	Function
RiWay-Dx	DMG	Fine Beads	70+/-2	Internal Lubricant
RiWay-Nx	GMS	Fine Beads	58+/-2	Internal Lubricant





POLYPROPYLENE / POLYETHYLENE

Product	Chemistry	Form@25 °C	Melt Point°C	Function
RiWay-Dx	DMG	Fine Beads	70+/-2	Antistat
RiWay-Nx	GMS	Fine Beads	58+/-2	Antistat
RiWay-Hx	GMHS	Fine Beads	65+/-2	Antistat
RiWay-Sx	PGMS	Fine Beads	58+/-2	Antistat
RiWay-Nx	GMS	Fine Beads	58+/-2	Antifog
RiWay-Lx	GMO	Liquid	-	Antifog
RiWay-Ox	PGMO	Liquid	-	Antifog



Class	Chemistry	Product	Form @ 25 °C	Melt Point °C	Function	PVC	PP	PE	EPS	PET	SAN	PA
Lubricants	DMG	RiWay-Dx	Fine Beads	70+/-2	External Internal	X			X			
											X	X
	PGMS	RiWay-Sx	Fine Beads	58+/-2	External	X						
	GTS	RiWay-Tx	Fine Beads	65+/-2	External	X			X			
	12 HSA	RiWay-Yx	Fine Beads	72+/-2	External	X						
	SA	RiWay-lx	Fine Beads	58+/-2	External	X						
	GMS	RiWay-Nx	Fine Beads	58+/-2	External Internal	X						
											X	X
	GMHS	RiWay-Hx	Fine Beads	65+/-2	Internal	X						
	GTHS	RiWay-Ax	Fine Beads	85+/-2	Internal	X						
	PETS	RiWay-Px	Fine Beads	62+/-2	External Internal					X		
						X						
	GMO	RiWay-Lx	Liquid	-	Internal	X						
	PGMO	RiWay-Ox	Liquid	-	Internal	X						
	GMR	RiWay-Rx	Liquid	-	Internal	X						
Antistat	PETO	RiWay-Ex	Liquid	-	External Internal					X		
						X			X			
	DMG	RiWay-Dx	Fine Beads	70+/-2	Antistat		X	X	X			
	GMS	RiWay-Nx	Fine Beads	58+/-2	Antistat	X	X	X				
Antifogs	GMHS	RiWay-Hx	Fine Beads	65+/-2	Antistat	X	X	X				
	PGMS	RiWay-Sx	Fine Beads	58+/-2	Antistat		X	X				
	GMS	RiWay-Nx	Fine Beads	58+/-2	Antifog	X		X				
	GMO	RiWay-Lx	Liquid		Antifog	X		X				
	PGMO	RiWay-Ox	Liquid		Antifog	X		X				

Lubricant

An agent that reduces friction in/between material(s).

Antistat

An agent that reduces/removes negative (static) electric charges in a material.

Antifog

An agent that helps spread condensed water droplets into a uniform transparent layer.

Recommended Dosage Levels: 0.25%-2.50% on average in each end use plastic.



Regd. Office :
202/203, Magnum Opus, Shanti Nagar Industrial Estate,
Vakola, Santacruz (East), Mumbai - 400055, Maharashtra, India.

Tel. : +91-22-6696 3707
Email : info@ricinash.com
Web : www.ricinash.com